

A white graphic overlay on a blue-tinted photograph of a park. The graphic features a central semi-circular arch with a small 'CV' monogram inside. Below the arch, the words 'CHANDLER PARK' are written in a large, white, serif font. The arch is flanked by two vertical posts with pointed tops, resembling a gate or fence.

CHANDLER PARK

MASTER PLAN | JANUARY 2025

Acknowledgments

City of Macomb

Michael Inman_____Mayor
Scott Coker, P.E._____City Administrator
Miranda Lambert_____Community Development Director
Savannah Ballard_____Marketing & Downtown
Development Director
Alice Ohrtmann, P.E._____Public Works Director
Jessica Biddenstadt_____Grant Writer/ Coordinator
Mike Fisher_____Cemetery Sexton

Farnsworth Group

Amy Wilson, PLA_____Landscape Architectural
Practice Leader
Bruce Brown, PLA_____Sr. Landscape
Architectural Manager
Greg Huss, AICP_____Urban Planner
Logan Pfalzgraf_____Graphic Designer
Sarah Oh_____Landscape Architectural Associate



*Where history, community and nature
come together.*

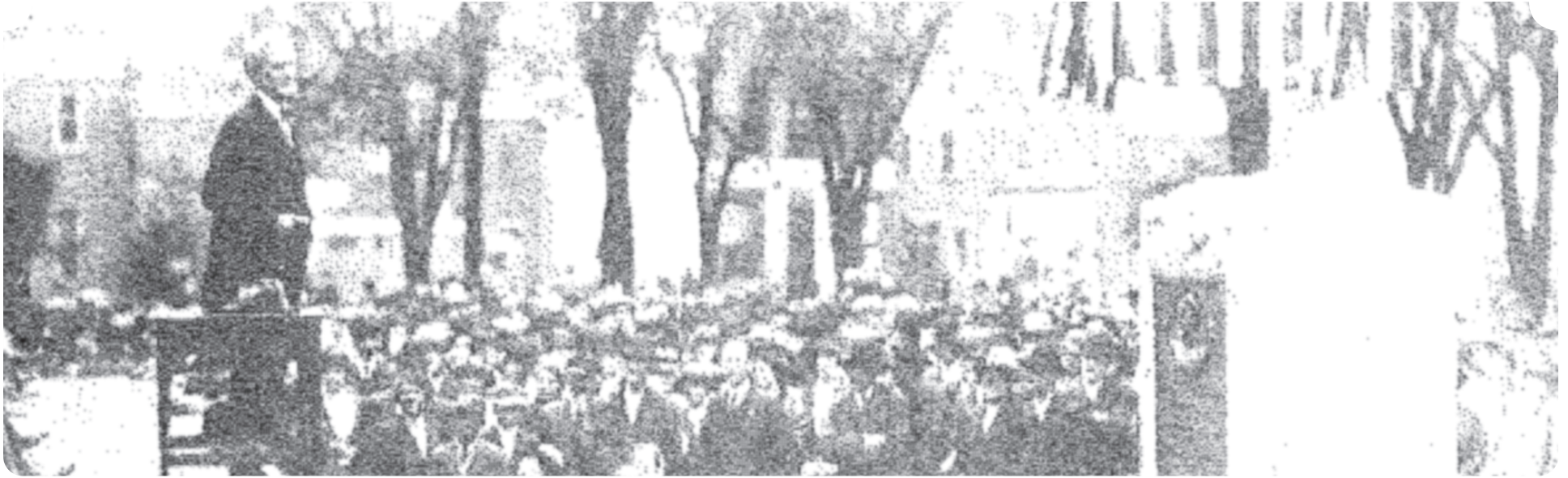


Table of Contents

| | |
|---------------------------------|----|
| PARK HISTORY | 5 |
| EXISTING CONDITIONS..... | 8 |
| PUBLIC & STAKEHOLDER INPUT..... | 26 |
| MASTER PLAN | 39 |
| SPECIFIC AREAS..... | 42 |
| CONCEPTUAL COSTS | 54 |



History



Senator L.Y. Sherman Speaks in Macomb 1914, McDonough unveiling the monument to the right.

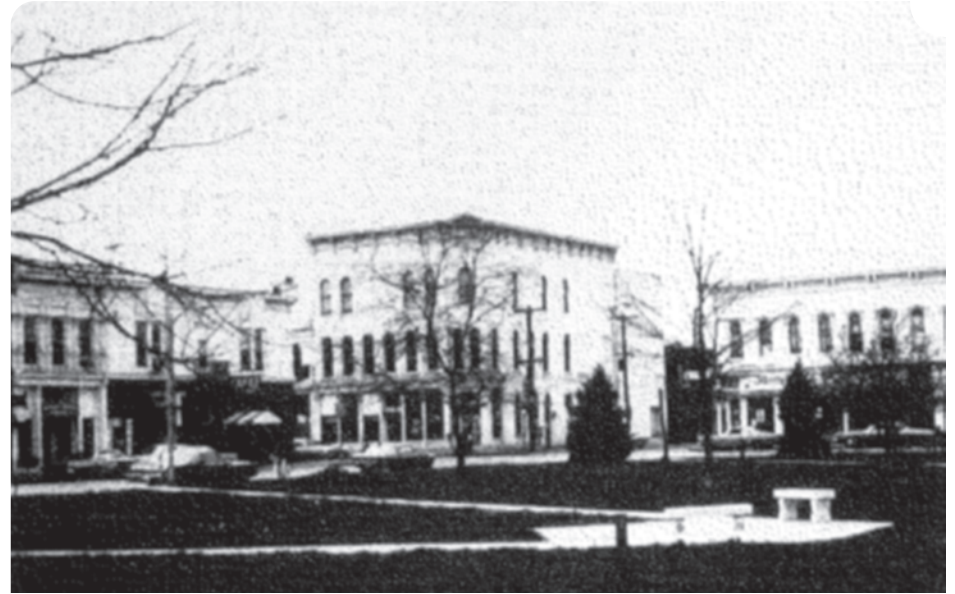
Chandler Park is located in Macomb, Illinois and is one of the city's most recognizable parks. Situated north of the downtown square and just south of the Macomb train station, the park is the size of one city block and is bordered by East Calhoun Street (U.S. 67/136), North Lafayette Street, West Carroll Street, and North Randolph Street.

The land that would soon become Chandler Park was originally purchased by Civil War veteran and local businessman C.V. Chandler in 1878. One of the City's most dedicated citizens, Chandler razed the existing buildings and opened the park the following year in 1879. The park was officially established in 1893 when Chandler donated the land to the City of Macomb. In 1899, C.V. Chandler had the first memorial statue erected at the park, a 20-foot-high monument that portrays a Civil War soldier

at rest. Today, the monument is one of ten sites on Macomb's Looking for Lincoln Self-Guided Tour. The Civil War monument was the first of several additional memorials added to Chandler Park over the next 220 years: Thomas McDonough Memorial (dedicated 1914), C.V. Chandler Memorial Arch (dedicated 1929), VFW Memorial (dedicated 1957), Ruth Watts Memorial Fountain (dedicated 1990), and Women's Memorial (dedicated 2015). In addition, the park features several other small memorials honoring other individuals and groups. A plaque honors Gus A.A. Shafer, who was active in the beautification of Chandler Park in the early 1900s. The cannon at the center of the park was erected by C.V. Chandler in 1899, honoring the men who lost their lives in battle. Memorial trees have been planted throughout the park.

Chandler Park is home to several events including the Farmers Market, Summer Concert Series, and the heavily-attended Heritage Days. The park acts as a focal point and central gathering place for the citizens of Macomb and McDonough County, with events and festivals attracting thousands of people throughout the year. Event attendees often gather on the lawn of the park and the roads surrounding it and also frequent the downtown Macomb businesses as a result of the gatherings. Performances can be seen at the gazebo, located on the eastern portion of the park. It was erected in 1982 and renovated in 2004. The Flags of Love and Memorial Bricks honor deceased and honorably discharged veterans that resided in McDonough County and can be found on the south side of the park near the water feature that acts as a natural gathering place for relaxation and conversation.

Chandler Park is a green space located in the center of the City of Macomb and adjacent to downtown. In addition to drawing users from across the city and county for events and major gatherings, the park represents a break from the surrounding environment, providing peaceful moments and passive recreation. The proximity to downtown and the population it serves makes Chandler Park one of the most important community amenities in the City of Macomb and McDonough County.



Chandler Park looking southwest toward Lafayette & Carroll Streets, 1970.



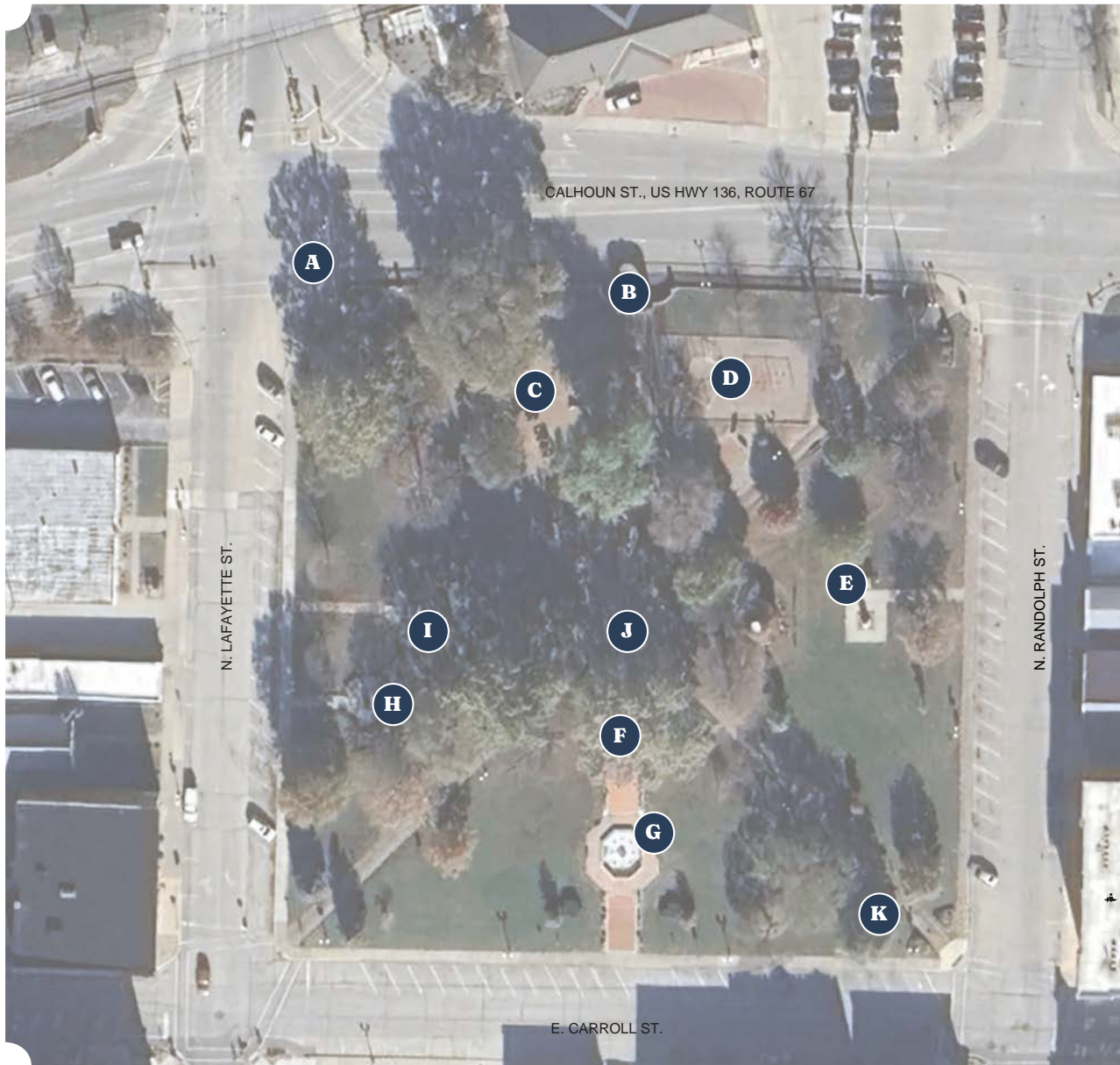
Chandler Park and Lafayette Street in 1898, courtesy of WIU Digital Collection.



CHANDLER PARK

Existing Conditions

Existing Park Amenities

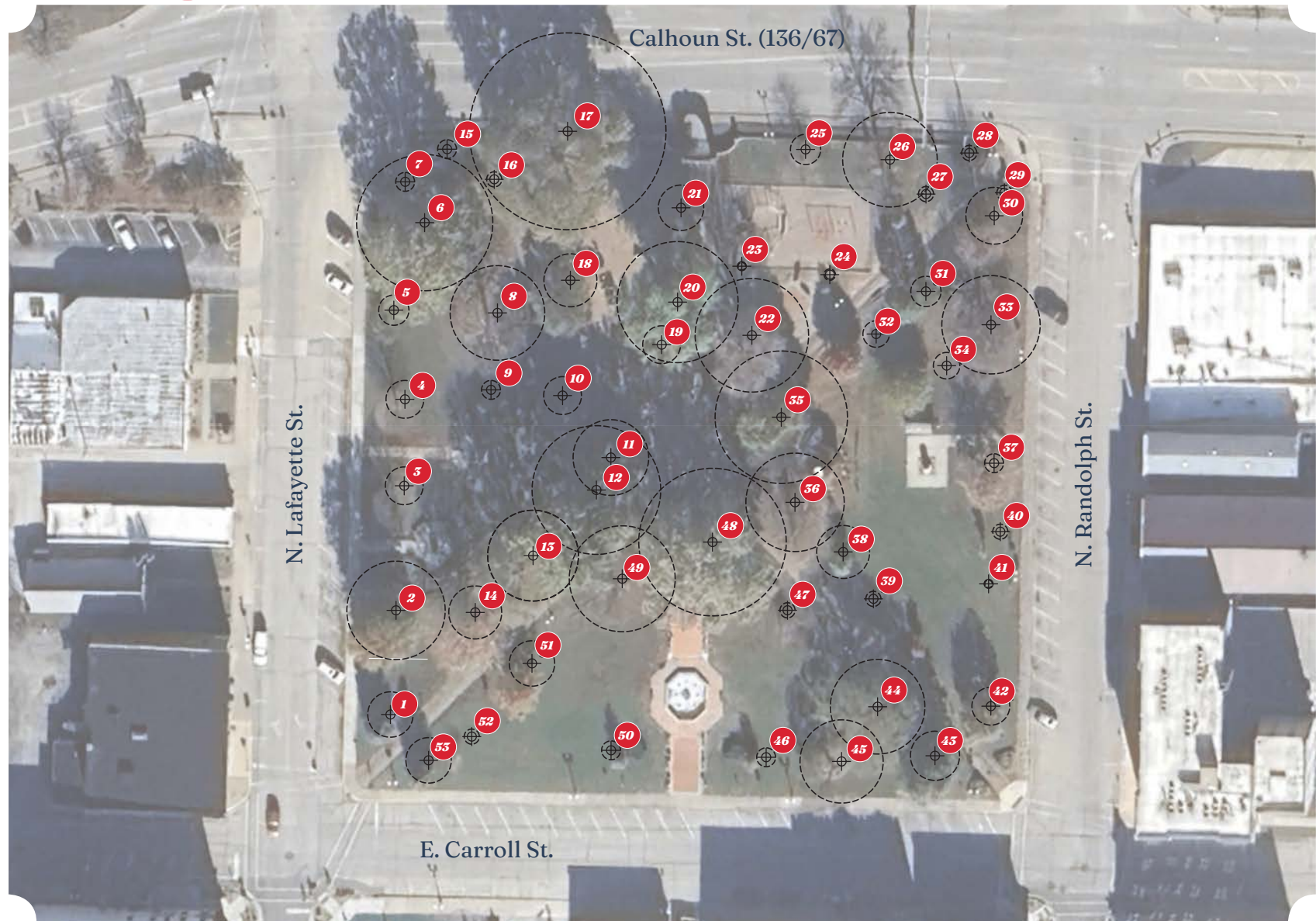


Park Callouts Legend

Letter Callout Details

| | |
|---|---|
| A | Arched Entry |
| B | CV Chandler Arch |
| C | Jim Miller-Melberg Concrete Play Sculptures |
| D | Kiwanis Playground |
| E | McDonough Monument |
| F | Veterans Memorial & Benches |
| G | Ruth Watts Memorial Fountain |
| H | Women's Monument |
| I | Civil War Monument |
| J | Cannon |
| K | J Gus A.A. Schafer Planters |

Existing Tree Plan



Tree Legend

| <i>Common Name</i> | <i>DBH</i> | <i>Location</i> | <i>Memorial</i> |
|-------------------------|------------|-----------------|-----------------|
| 1. Blue Spruce | 12 | West | x |
| 2. Pin Oak | 26 | West | x |
| 3. Black Maple | 10 | West | x |
| 4. Black Maple | 10 | West | x |
| 5. Chinquaoín Oak | 8 | West | x |
| 6. Sycamore | 36 | West | |
| 7. Dogwood | 5 | West | |
| 8. Sugar Maple | 25 | West | |
| 9. Bald Cypress | 5 | West | Arbor Day |
| 10. Red Oak | 10 | West | |
| 11. Crabapple | 20 | West | |
| 12. Sycamore | 34 | West | |
| 13. Hackberry | 24 | West | |
| 14. Sugar Maple | 20 | West | |
| 15. Dogwood | 5 | North | |
| 16 . Red Bud | 4 | North | |
| 17. Hackberry | 52 | North | |
| 18. Elm | 14 | North | x |
| 19. Chinkapín Oak | 10 | North | x |
| 20. Sugar Maple | 32 | North | |
| 21. Elm | 12 | North | x |
| 22 . Gíngko | 30 | North | |
| 23. Tree Lilac | 2 | North | |
| 24. Tree Lilac | 3 | North | |
| 25. October Glory Maple | 8 | North | |
| 26. American Linden | 25 | North | |
| 27. London Plane | 4 | North | |

| <i>Common Name</i> | <i>DBH</i> | <i>Location</i> | <i>Memorial</i> |
|-------------------------|------------|-----------------|-----------------|
| 28. Dogwood | 4 | North | |
| 29. Dogwood | 4 | East | |
| 30. Autumn Blaze Maple | 15 | East | |
| 31. London Planetree | 8 | East | x |
| 32. Red Maple | 7 | East | x |
| 33. American Linden | 26 | East | |
| 34. American Beech | 7 | East | |
| 35. Norway Maple | 21 | East | |
| 36. American Linden | 27 | East | |
| 37. Burr Oak | 5 | East | |
| 38. London Plane | 14 | East | |
| 39. Celebration Maple | 4 | East | |
| 40. Celebration Maple | 4 | East | |
| 41. October Glory Maple | 2 | East | |
| 42. Burr Oak | 10 | East | x |
| 43. Chinquapín Oak | 13 | South | |
| 44. River Birch | 25 | South | |
| 45. Golden Rain Tree | 22 | South | |
| 46. White Oak | 5 | South | |
| 47. Blackgum | 4 | South | |
| 48. Sycamore | 39 | South | |
| 49. American Linden | 28 | South | |
| 50. White Oak | 5 | South | x |
| 51. Swamp White Oak | 12 | South | x |
| 52. American Chestnut | 4 | South | x |
| 53. Blue Spruce | 12 | South | x |

Site Photos



Brick walkways, uneven and rutted from vehicular use



Brick walks intersect in center of park, looking northeast



View from center of park looking northeast



View from center of park looking northwest



View from center of park looking southeast



Brick paver walkways, uneven and rutted from vehicular use



View from center of park looking north at closed archway

Site Photos



Masonry wall & columns with ornamental fence border the north edge of park



Planting beds throughout the park are maintained by Macomb Beautiful



Memorial rock placed in planting bed at northwest entrance



Chandler Park ornamental arch and masonry columns at northwest entrance to park



Kiwanis seating area with drinking fountain in northeast quadrant



Unightly portable restroom(s) must be placed in proximity to the park for users, blocking accessible sidewalk routes



Concrete play sculpture area aka "swiss cheese" playground



Historical style light fixture at center of park

Site Photos



Electrical cabinet just north of veterans memorial



Side view of electrical cabinet



Manhole in greenspace



Fire hydrant at south side of park



Damaged pedestal at south end of park, looking west



View into park from northeast corner



Traditional playground equipment/area



Brick paver sidewalk along Randolph, looking south

Site Photos



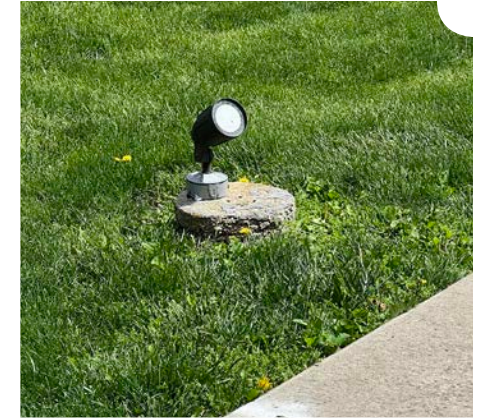
Brick paver sidewalk along Calhoun (67/136) looking west



City center bus station is located northeast of park



Amtrak train station is directly north of park across Calhoun st. (136/67)



Outdated spotlights for monuments throughout the park



Lighted bollard & power receptacles placed throughout the park



Outdated spotlights for monuments throughout park



Bike racks at southeast quadrant of the park



Litter receptacles throughout the park

Civil War Monument



Women's Day Monument



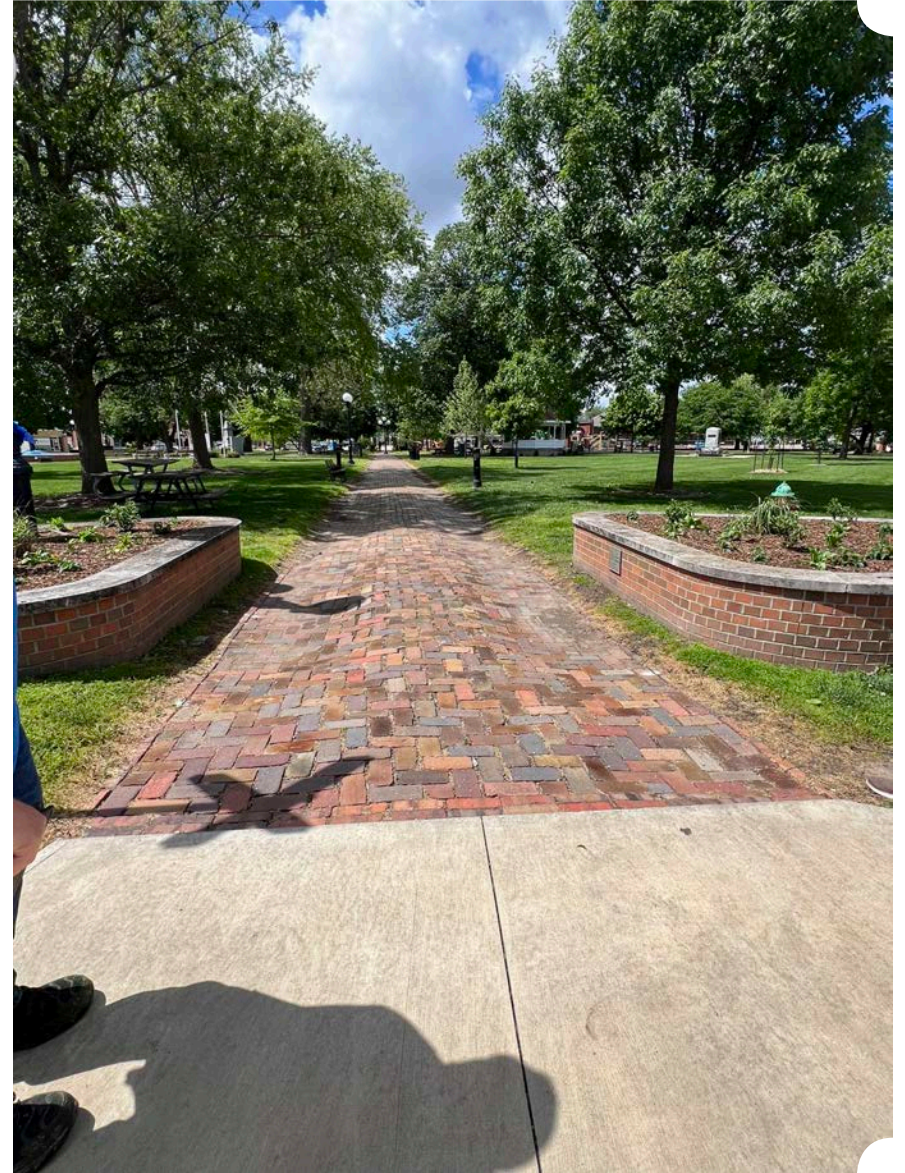
McDonough Monument



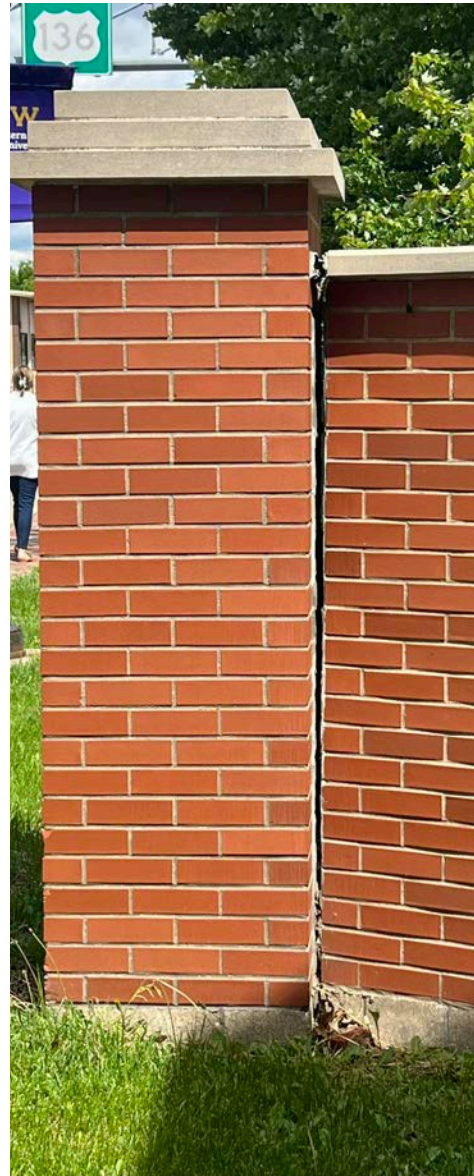
A photograph of a park featuring a white gazebo with a brown roof and a small balcony, situated on a grassy area. A paved path leads to the gazebo, and a large tree is on the left. In the background, there are brick buildings and a parking lot.



Gus A.A. Schafer Planters



CV Chandler Arch



Veterans Memorial, Pavers and Benches



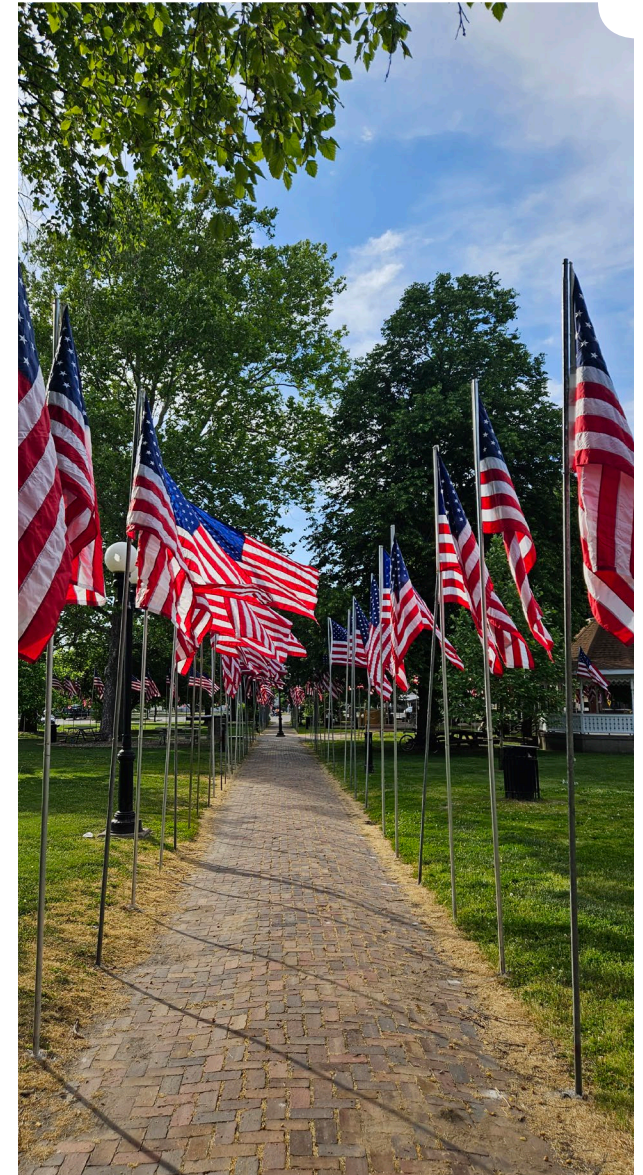
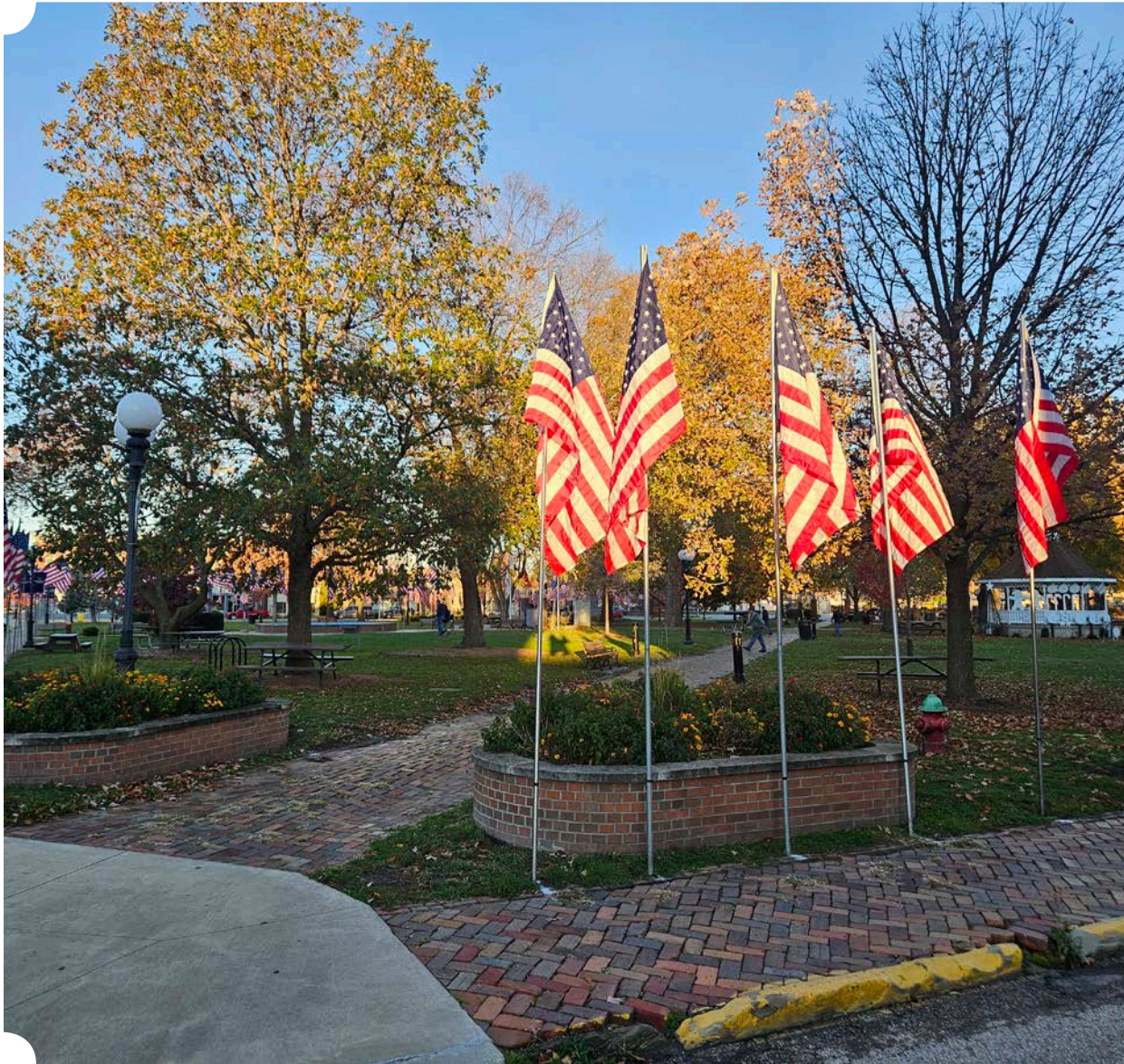
Ruth Watts Memorial Fountain



Cannon Monument



Flags of Love





CHANDLER PARK

Public & Stakeholder Input

Public Design Workshop

Farnsworth Group (FGI) conducted a public design workshop for the Chandler Park Master Plan to gather information and residents' opinions on the park as it exists currently and what they would like to see designed as a part of this project. The Public Design Workshop was attended by 30 individuals and followed the following format:

- Project Overview: Purpose and Process – Slide show presentation by FGI
- Existing Conditions – Slide show presentation by FGI
- SWOT Analysis – Group discussion between attendees, facilitated by FGI
- Design Charrette – Breakout sessions between attendees, facilitated by FGI

FGI explained the purpose of the plan, defining a Master Plan as follows:

- Site Design: Identifies the layout and arrangement of park features, amenities, and infrastructure.
- Programmatic Needs: Helps determine the facilities and services required to meet community needs such as farmers markets and other special events.
- Budgeting and Phasing: Assists in setting realistic budgets, determining the order of development phases, and positions the community favorably for grant opportunities to fund construction phases.



The project process was presented as follows:

- **Public Engagement (June-July)**
 - › Staff input
 - › Stakeholder interviews
 - › Public Design Workshop
 - › Online public survey
 - › Public engagement summary
- **Design Development (July-August)**
 - › Programming
 - › Conceptual Site Plan
- **Master Plan (September)**
 - › Rendered site plan
 - › Vision book
 - › Public engagement summary
 - › Site plan
 - › Phasing
 - › Budget

FGI provided dozens of photos collected of Chandler Park on a slide show. Attendees stated they were familiar with the conditions and provided comments on occasion.

FGI posed four specific questions to the attendees for them to answer in a group setting. The responses were written down for all to observe and are included on this page.

What do you like most about Chandler Park?

- Mature trees
- History/Monuments/Memorials (specifically the Veterans Memorial and bricks)
- Separate nodes of activity (playground, gazebo, memorials, etc.)
- Gazebo
- Location in town/relationship to Downtown/ represents the front door to the city
- Nearby parking
- Unique playground
- Benches and picnic tables
- Floral displays
- The look of the brick sidewalks
- Flags
- Locked front gate/fence
- No easy access from north side/safety

What do you like least about Chandler Park?

- concerns/crosswalk concerns
- Vendor traffic through park
- Drainage

- Traditional playground is non-inclusive
- Doesn't address teenage group
- Curbs in disrepair
- Not attractive to working professionals
- Uneven bricks/sidewalk fixes
- Gathering place
- Additional traditional seating/pods of seating/conversation areas
- Updates to existing picnic tables and add new ones

What are your needs at Chandler Park?

- Special and seasonal events
- Functional presentation/concert venue
- Place to walk dogs
- Monument protection
- Working drinking fountain/pet fountain/ bottle filler
- Electricity upgrades
- Trash receptacles/recycling
- Toilets
- Monetization of events
- Family recreation
- Covered shelter area
- Open space
- Fitness hub
- Plantings/landscaping
- Sidewalk fixes
- Cost
- Maintenance/respect park space/rule enforcement

- Clutter of too many things in a small space
- Loitering/security

What are your concerns with Chandler Park?

- Trash
- Historic preservation
- Tree protection
- Too much signage
- Balance of lighting without being too much
- Traditional Christmas lighting discontinued
- Development limits



Public Design Workshop

Each attendee was then encouraged to vote on which item from the SWOT analysis they felt was most important – whether it was something they like, dislike, need, or are concerned about, each attendee got one vote. The result is the most important items from the SWOT analysis, in the eyes of the attendees. Results shown to the right.

| | |
|---|--|
| Sidewalk fixes/brick sidewalks_____..... | Monetization of events needed_____. |
| History/Monuments/ Memorials/Preservation_____..... | Need for park to remain a gathering space_____. |
| Need for a functional presentation/concert venue_____.. | Existing gazebo is a positive_____. |
| Fitness hub needed_____.. | Good existing shade trees_____. |
| Place to walk dog needed_____.. | No easy access from north side/safety concerns/crosswalk concerns_____. |
| Working drinking fountain/pet fountain/ bottle filler needed_____. | Traditional playground is non-inclusive_____. |
| Electricity upgrades needed_____. | Pods of seating/conversation needed_____. |
| Trash receptacles/recycling needed_____. | |



The final exercise of the public design workshop was for attendees to work in groups to sketch recommendations onto provided 36x48 maps of the existing park. They were encouraged to imagine the park as a blank slate and to provide ideas as to what they would like the park to look like. In addition to the attached files, attendees' recommendations included:

- Playground on the east or west side of the park
- Entertainment on the north side of the park
- Bridge crossing Highway 136 from the train station
- Arch entryway on the northwest corner
- Move General Macomb statue to west side
- Playground in center of park for parents to see kids no matter where they are
- Taller walls on the fountain to prevent people from wading
- Fitness equipment on southwest side of park
- Larger gazebo/band shelter to replace current gazebo in same location. Band shelter to face into the park but have mural on back facing out of the park
- Expanded sidewalk in the middle of the park where they cross to create a plaza
- Need for a bigger and updated gazebo
- New bathrooms on the northeast side of park
- String lights
- Crosswalk on Highway 136 at northeast corner of park
- Add additional electrical conduits through park
- Concrete sidewalks with pavers on outside
- Fitness equipment on north side of park
- State historical sign on northwest side of park
- West side of park is for history with statues currently in the middle

- and east side of the park moved to west; east side of park is for entertainment with new covered stage and elimination of gazebo
- Permanent flag sockets lining the sidewalks
- Pavers or concrete protruding ~30' off Carroll Street into the park to be used for market
- Wider sidewalks all around
- Additional handicap accessible picnic tables
- New restrooms not needed; better locations for part-a-john is more important
- Patio/plaza space in the center of the park, with space for people to bring chairs and watch performances on the gazebo
- Removal of the sidewalk leading to the 'gate to nowhere' on the north side of the park
- Pod seating, conversation areas, and benches scattered throughout the park
- Curbing for planting beds
- Keep the sidewalks that move from the corners of the park into the center
- Move General Macomb and the cannon to the west side of the park; this side of the park becomes the historic side of the park with a new historic site designation marker
- Add dog stations
- Pedestrian crossing across Highway 136 on northeast corner of the park.

Public Input Survey

To garner additional public feedback outside of the stakeholder interviews and in-person public design workshop, Farnsworth Group created an online survey consisting of 7 total questions:

1. Why do you visit Chandler Park?
2. How do you travel to Chandler Park when you visit?
3. Are you satisfied with the current amenities at Chandler Park?
4. What improvements would you like to see at Chandler Park?
5. Do you support recreational improvements (playground, gazebo, etc.) to Chandler Park?
6. Do you support public infrastructure improvements (parking, sidewalks, drainage, lighting, etc.) at Chandler Park?
7. Do you have any additional comments regarding Chandler Park?

Hard copies of the survey were also made available at City Hall for individuals to complete as an alternative to the online format. The survey was open for approximately three weeks. There were over 400 responses online and a dozen paper surveys completed. Survey results are shown on the following pages.



The poster features the Macomb Illinois logo at the top left, with the tagline 'Small town living. Community division.' Below the logo, the title 'CHANDLER PARK MASTER PLAN PUBLIC INPUT SURVEY' is written in large, bold, red capital letters. A QR code is positioned on the left side, and the phrase 'LET YOUR VOICE BE HEARD!' is written in large, bold, dark blue capital letters to the right of the QR code. At the bottom, a yellow banner contains the URL 'https://www.surveymonkey.com/r/ChandlerPark'. The background of the poster shows a faint image of the Chandler Park building.

**CHANDLER PARK MASTER PLAN
PUBLIC INPUT SURVEY**

**LET YOUR
VOICE
BE HEARD!**

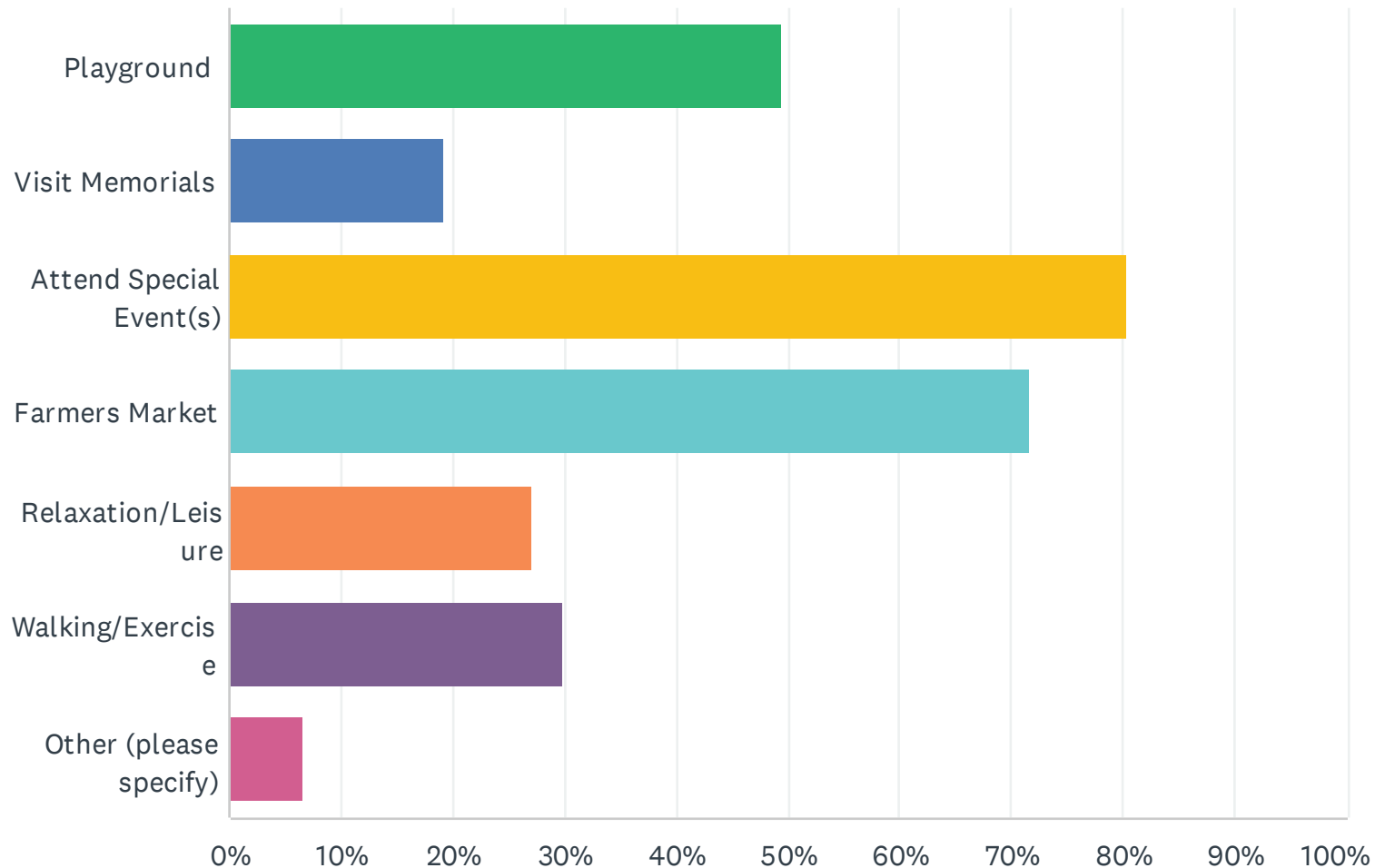
<https://www.surveymonkey.com/r/ChandlerPark>

**LET YOUR
VOICE
BE HEARD!**

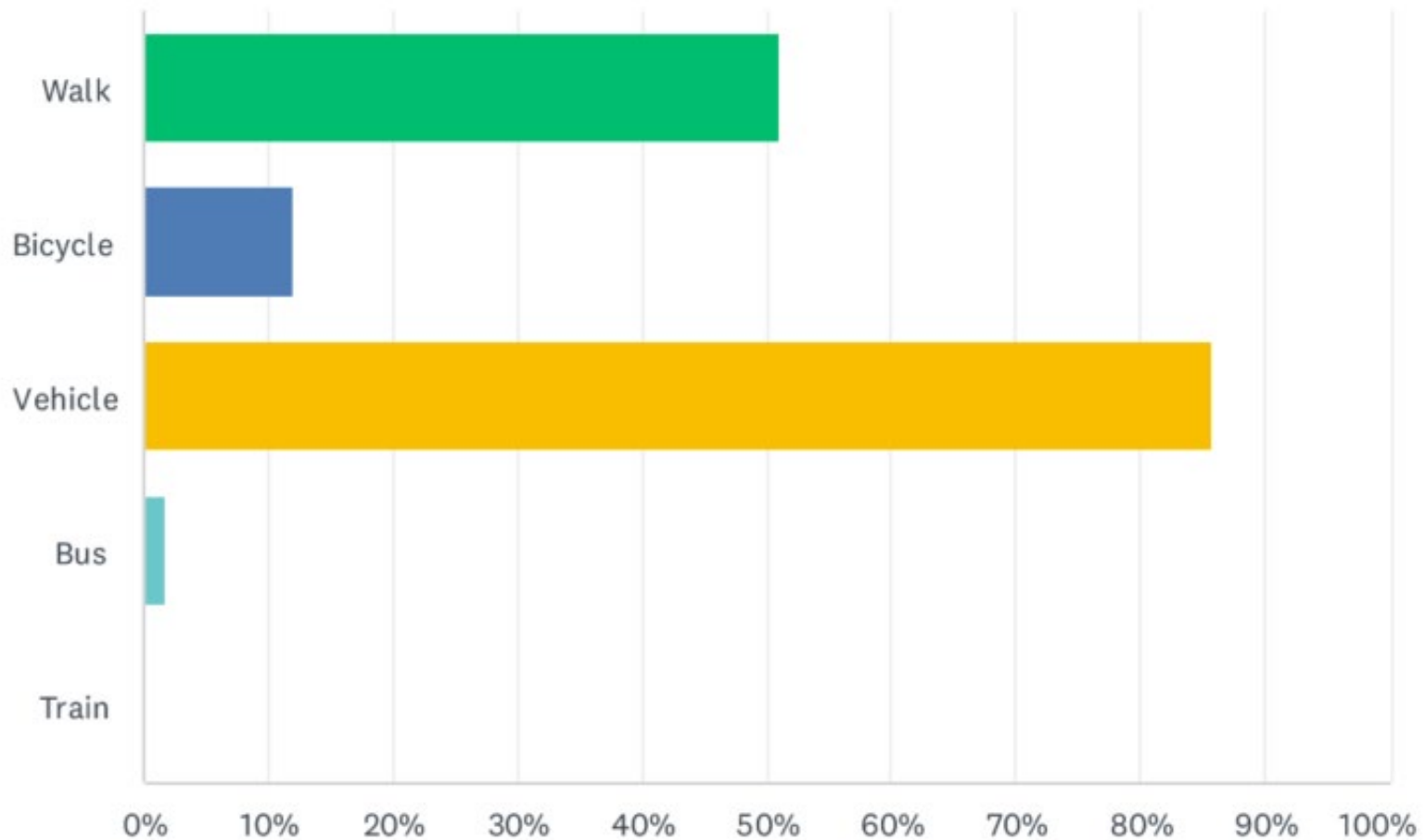
**CHANDLER PARK MASTER PLAN
PUBLIC INPUT SURVEY**

Public Input Survey Results

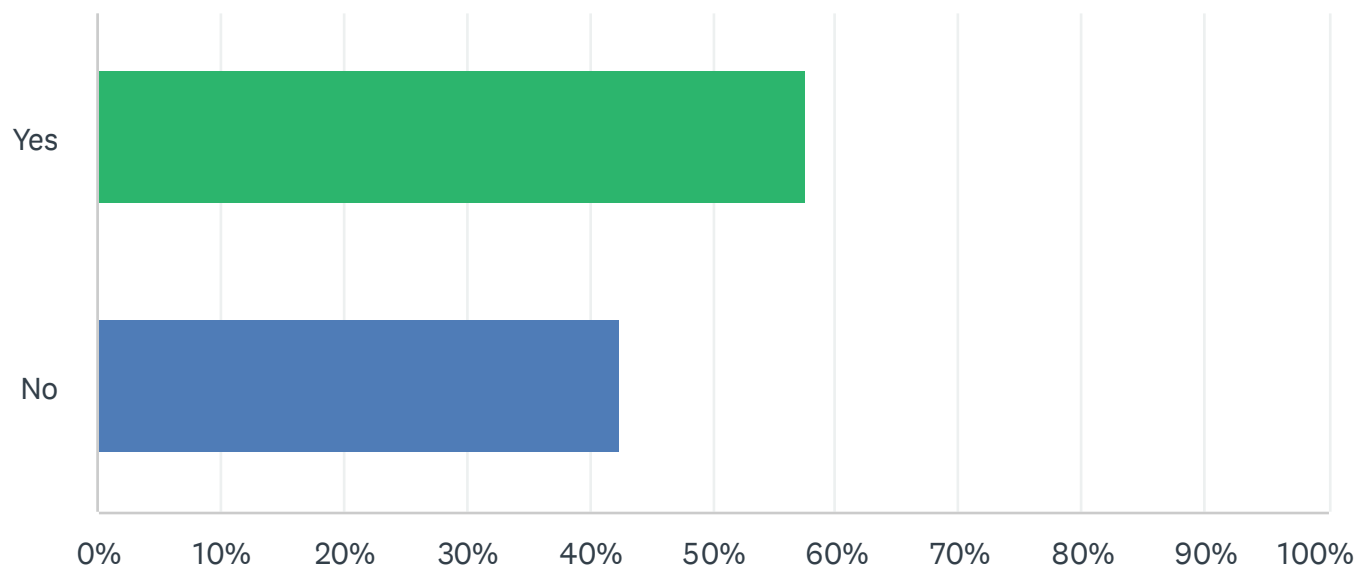
Question 1: Why do you visit Chandler Park? 402 answers, 1 skip



Question 2: How do you travel to Chandler Park? 402 answers, 1 skip



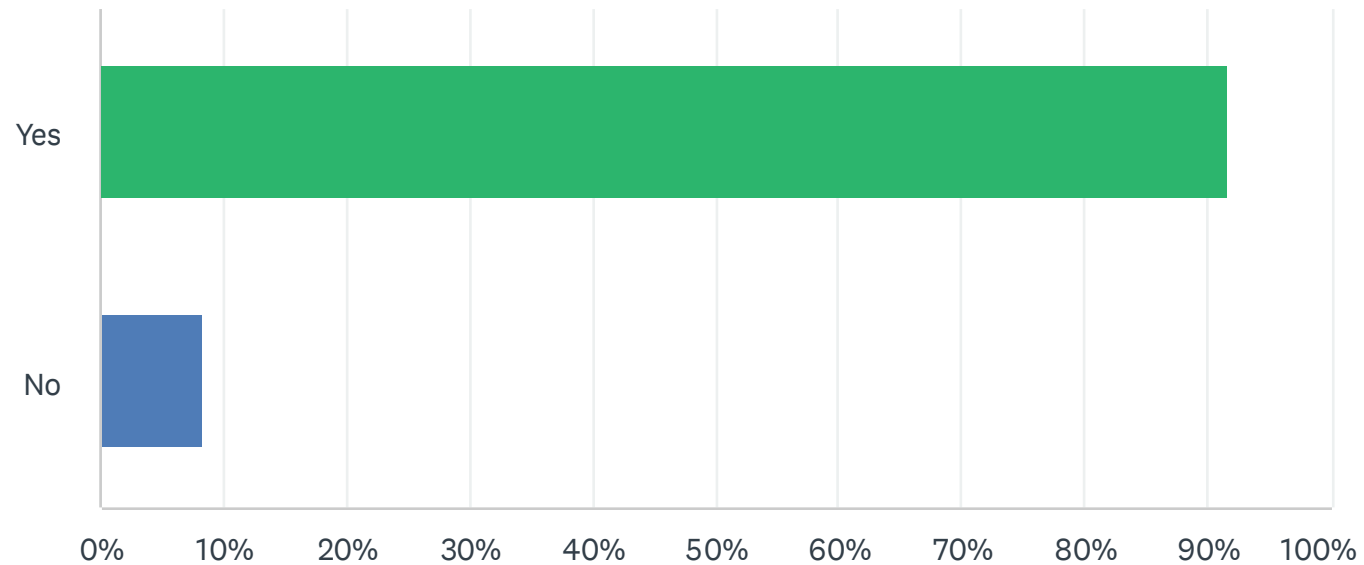
Question 3: Are you satisfied with the current amenities at Chandler Park? 387 answers, 16 skips



Question 4 What improvements would you like to see at Chandler Park?

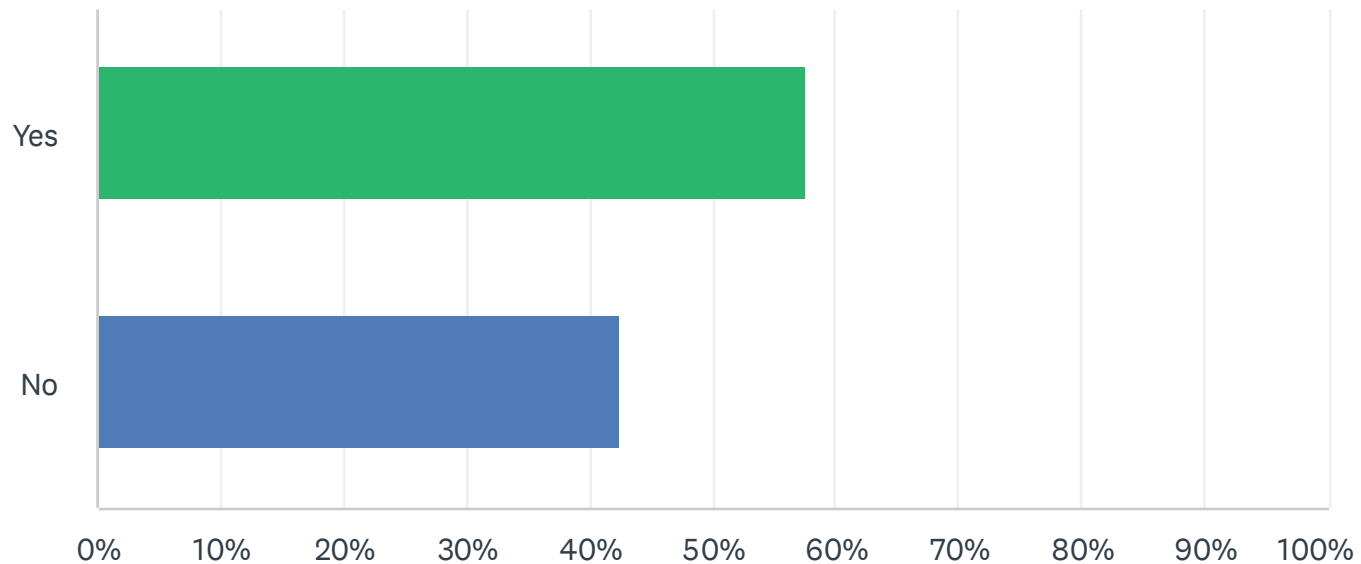
Question 4 received a large variety of answers that can be found appendix a. There were 289 answers, and 114 individuals skipped this question without providing an answer.

Question 5: Do you support recreational improvements (playground, gazebo, etc.) to Chandler Park? 393 answers, 10 skips



Question 6: Do you support infrastructure improvements (parking, sidewalks, drainage, lighting, etc.) at Chandler Park?

399 answers, 4 skips



Question 7

Do you have any additional comments regarding Chandler Park?

Question 7 received a large variety of answers that can be found appendix B . There were 171 answers, and 232 individuals skipped this question without providing an answer.

Stakeholder Input

Farnsworth Group (FGI) conducted one-on-one virtual, phone or in-person interviews with 17 individuals identified by City staff as key stakeholders within the community. The purpose of these guided interviews was to gather information and opinions on the park as it exists currently and what they would like to see designed as a part of this project.

Bullet points across from each category denote the number of unique individuals who gave that response.

What is your general perception of Chandler Park?

| | |
|--------------------|-------|
| Crowded | |
| Historic | |
| Hub for activities | |
| Meant for all ages | |
| No identity | |

| | | | |
|-----------------------|-------|---|-------|
| Centrally located | ... | Public Space | .. |
| Beautiful | ... | Chairs provided by WIU | .. |
| Active year-round | ... | Electricity/lighting | .. |
| Brings people to town | ... | Lunch program | .. |
| Sidewalks need help | ... | Fountain | . |
| Unique | .. | What activities have you participated in at Chandler Park? | |
| Green Space | .. | Heritage Days | |
| Foot traffic | .. | Farmers Market | |
| Drainage issues | .. | Special events | |
| Clean | . | Summer/brown bag concerts | |
| Not well-planned | . | Flags of love program | |
| Static, no appeal | . | Car shows | ... |
| Playground | | Downtown Block Party | .. |

What amenities do you use at Chandler Park?

| | | | |
|----------------|-------|----------------------------|---|
| Gazebo | | 20th anniversary party | . |
| Social Events | | 50th anniversary mural | . |
| Sidewalks | ... | CT Vivian celebrations | . |
| Benches | ... | Family Day | . |
| Monuments | ... | First Responders Activity | . |
| Vendor areas | ... | Lincoln Days | . |
| Picnic Tables | ... | Veterans Memorial | . |
| Women's Statue | .. | Womens Monument Dedication | . |
| | | Womens Voting Celebration | . |

What do you like most about Chandler Park?

Trees/shade.....

Location/proximity to downtown.....

Open space/gardens.....

Displayed history.....

Focal point when driving.....

Gazebo.....

Landscaping.....

Activity hub.....

Gathering areas..

Playground..

Small town feel..

Brick wall to block traffic.

Clean.

Fountain.

Monuments.

Water spigots.

What do you like least about Chandler Park?

Brick sidewalks.....

Poor drainage.....

Vandalism.....

Playground equipment needs update...

Too many statues.....

Lack of planned layout.....

Misuse of park.....

Litter..

Light show doesn't match aesthetic..

Gazebo used as stage/for events..

Loitering..

Concerns about womens statue.

No public restrooms.

Landscaping.

Gate closure on north side.

Noise from train/traffic.

Grass dying.

Overcrowding on Heritage Days.

Monuments.

Are there any amenities in the park that you feel aren't being utilized by the community?

None, meaning all are used....

Monuments.....

Gazebo being misused.....

Fountain used for youth play.....

Lack of info on space reservation.....

Lack of info on WIU chairs.....

East side.....

"Swiss cheese" playground area.....

What additional amenities would you like to see at Chandler Park?

Permanent restroom.....

Amphitheater.....

Seating.....

Place for conversation/reflection..

Splash pad..

Music on Wednesdays..

Alternative playground safety surface.

Remove farmers market from grass.

Perimeter sidewalks.

More winter activities.

Dessert/drink shop nearby.

Drinking fountains.

Grills.

Garden area.

What would you like to see improved at Chandler Park?

Sidewalks.....



| | | |
|--|--|--|
| Gazebo_____... | Congregating all areas to this park, not using | Don't relocate gazebo_____. |
| Reworked electrical_____... | other parks in area_____. | Womens group is responsible for both_____. |
| Grass_____.. | Trouble drawing attention to park_____. | VFW & American Legion have joint |
| Fountain_____. | Invasive tree removal_____. | responsibility for WWII monument_____. |
| More lighting_____. | Cost to renovate historic pieces_____. | Fountain has to be turned off during large |
| Parking spaces_____. | Do you have any additional | events due to electricity draw_____. |
| Security_____. | comments about Chandler Park? | Town relies on WIU, less students means |
| Less monuments_____. | Sidewalks should be concrete_____... | smaller census & lack of funding_____. |
| Maintenance and health tests for trees_____. | Spring & Fall cleanup needed_____.. | Put arch/art at SW corner_____. |
| None_____. | Loiterers littering_____.. | |
| Curbing_____. | Additional amenities use up space, need to | |
| | leave room for open space_____.. | |
| | Tree board foundation in '92_____.. | |
| | Hackberry in NW corner saved by use of | |
| | I-beam under wall vs concrete foundation__.. | |
| Negative comments about change_____..... | Crowded on Heritage Days_____.. | |
| Clashing opinions_____... | Likes holiday lights_____.. | |
| Electrical impacting development_____... | Fountain is used as wading pool_____.. | |
| Lack of funding_____... | Water play area for families_____.. | |
| Changing width of sidewalks_____.. | Stolen plaque on bench_____.. | |
| Merchant complaints due to construction | Park should be better respected & return to | |
| blocking business_____. | original use as monument park_____.. | |
| Unable to expand due to location_____. | Make half of park protected (see above)_____. | |

What challenges do you feel the City faces as they embark on the Master Planning process for Chandler Park?





CHANDLER PARK

Master Plan

Programming

1. Existing Monuments to remain on-site but relocated within the park all on the west side creating a historical quadrant.
2. New water feature in central plaza, dedicated to Ruth Watts. Existing Fountain to be removed.
3. Create fenced in play area east of central plaza, relocate existing concrete play sculptures to mulched area under existing tree canopy, and create new accessible play area with Unitary Safety Surface.
4. Majority of existing Trees to remain and be protected. 3 trees shall be relocated and 4 trees shall be removed (one of which is on the invasive species list).
5. Farmers' Market/Vendor Areas designated with adjacent power receptacles. Vehicular access will be restricted to paved spaces along south and east edges of park.
6. Infrastructure updates to include new accessible sidewalks with brick paver edging, perimeter curb and gutter, bike lane, drainage improvements, electrical service, vendor power, LED pedestrian lighting, and technology. Flags of Love pipe sleeves and plugs will be placed throughout the park adjacent to all proposed perimeter and interior sidewalks allowing for additional flags if desired.
7. Performance Shelter, existing gazebo to be removed.
8. Public Restrooms, part of performance shelter building structure.
9. Informational kiosks will be provided at corners of park. Shall include educational information regarding park and its monuments/memorials.
10. Bicycle trailhead at east entrance to park.

Vision Statement

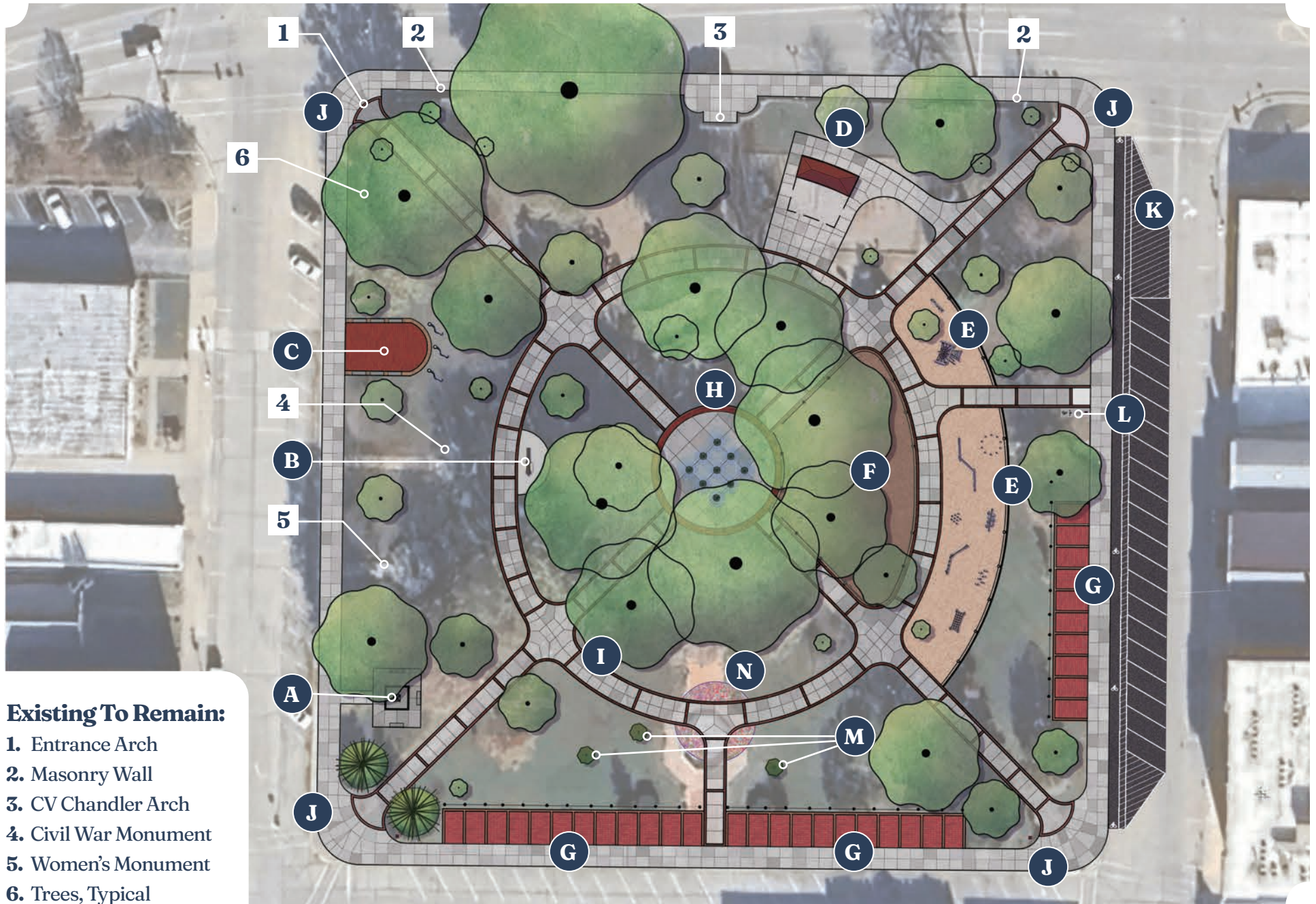
“Chandler Park serves as a charming and welcoming space in the heart of downtown Macomb where history, community and nature come together. We envision a place where everyone, regardless of age and ability, can connect with our rich heritage, engage in meaningful community gatherings, and create memorable recreational experiences.”

By fostering accessibility, preserving our history, and promoting inclusivity, our park will continue to be a cherished sanctuary that enhances the well-being of all who visit.

Master Plan Legend

- A. Relocated McDonough monument
- B. Relocated cannon
- C. Relocated Veterans Memorial, including benches, pavers, and flagpoles
- D. Performance shelter with restrooms and drinking fountain / bottle filler
- E. Play area with unitary surfacing and ornamental fencing
- F. Relocated Jim Miller-Melberg concrete play sculptures
- G. Farmers market / Heritage Days vendor paver stalls, bollards, and chain rope adjacent
- H. Central plaza with fountain jets, Ruth Watts memorial plaque relocated
- I. Concrete sidewalk with brick paver edging
- J. Concrete sidewalk with curb & gutter
- K. Bike lane & new striping for angled parking
- L. Trailhead with bike racks, bike repair station, bottle filler, and kiosk
- M. Trees to be relocated
- N. Gus AA Schafer memorial planters, memorial plaque relocated







Specific Areas

Central Plaza



Playground



Playground



Trailhead



Performance Shelter



[illegible]

Farmers Market *East*



Farmers Market *South*



Veterans Memorial



Historic Quadrant



Specific Areas

Historic Quadrant





Conceptual Costs

Conceptual Costs

Implementing the vision of this Master Plan will not happen overnight, but over the course of many years. This Master Plan is meant to guide planning and design of Chandler Park over the next 5-10 years. Flexibility, including alterations to this Master Plan and phasing, may be necessary to align with funding and resources as they become available. The following is a summary of conceptual costs for suggested improvements. These conceptual costs are preliminary in nature and subject to change once more detailed plans are developed and finalized.

| | |
|--|----------------|
| General Site / Infrastructure Improvements | \$1,160,900.00 |
| Monument Relocation | \$133,000.00 |
| Performance Shelter / Restrooms | \$520,650.00 |
| Play Area | \$392,450.00 |
| Farmers Market / Vendor Area | \$204,300.00 |
| Central Plaza with Water Feature | \$250,900.00 |
| Trailhead | \$11,100.00 |
| Landscape Items | \$60,760.00 |

Overall Chandler Park Master Plan Budget: **\$3,280,872.00***

**Total reflects a 20% design & construction contingency*

Funding Alternatives

Funding, possibly from a variety of different sources, will be required to implement the various components of this Master Plan. This funding may come from state and federal grant assistance, City of Macomb general funds, bonding, and corporate / private donations. Listed below are various grant programs which could be utilized to implement various elements of the master plan:

- Illinois Transportation Enhancement Program (ITEP), Illinois Department of Transportation
- Open Space Land Acquisition & Development (OSLAD), Illinois Department of Natural Resources
- Rebuilding American Infrastructure with Sustainability and Equity Program (RAISE), U.S. Department of Transportation
- Illinois State Bike Grant Program, Illinois Department of Natural Resources
- Community Facilities Direct Loan & Grant Program, U.S. Department of Agriculture
- Hometown Grants, T-Mobile



